

# TSG SOLAR ELECTRIC WATER HEATER

Wall installation vertically or horizontally

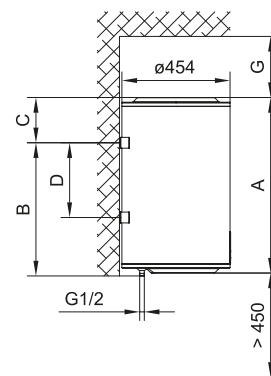
## Technical Features

- Incorporates Solar Manager technology to detect surpluses and heat water with solar energy.
- Adapts its consumption in real time according to available energy.
- Dual operation: solar-only or combined with mains power.
- Enamelled steel tank with anti-corrosion protection.
- Magnesium anode.
- Dielectric hoses with high mechanical resistance.
- Direct immersion electric heating element.
- Control panel led with temperature level selected and errors signaling.
- Water heater On/Off and temperature adjustment key.
- “Dry-Firing” protection that prevents turning on the water heater if it is not filled with water before connecting.
- LED indicator in case of safety thermostat and overheating protection.
- Non-return and pressure relief valve.
- High quality insulation against heat losses.
- Supplied with 1m main cable and plug for electrical connection.
- Thermostatic valve available as accessory.
- Only one Solar box accessory needed per installation for control and management of the TSG solar water heater in self-consumption installations.
- G Control USB HUB needed to function as a connected water heater that heats water during scheduled hours.

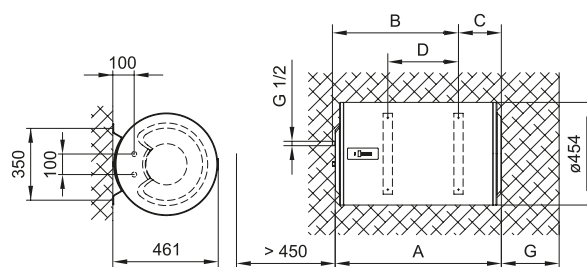


SOLAR BOX accessory

SOLAR WIFI ELECTRIC WATER HEATER		TSG-100	TSG-150
Capacity	L	100	150
Output	W	1600	1600
Current	A	6,9	6,9
Voltage		230 V~	230 V~
Insulation		Class I	Class I
Colour		White	White
Average consumption to keep water at 65 °C <sup>(1)</sup>	kWh/24h	2,20	3,20
Heating time 65 °C from 10 °C		4 h 5 min	6 h 8 min
Quantity of water available with 40 °C mixture <sup>(2)</sup>	L	183	275
Water connections		1/2"	1/2"
Net weight without water	kg	33	45
Dimension A	cm	96,5	133,5
Dimension B	cm	76,5	111,5
Dimension C	cm	20,5	22,5
Dimension D	cm	49,5	84,5
Dimension G	cm	51	51
Diameter	cm	45,4	45,4
Depth (including support)	cm	46,1	46,1
Internal code		90850100	90850150
EAN13		8432336790683	8432336790706



VERTICAL INSTALLATION



HORIZONTAL INSTALLATION

Energy classification according to European Regulation 812/2013. (1) Valid values for an ambient temperature of 20°C and 65°C hot water temperature in the heater (Standard EN 60379: 2005). (2) Standard EN 50440.